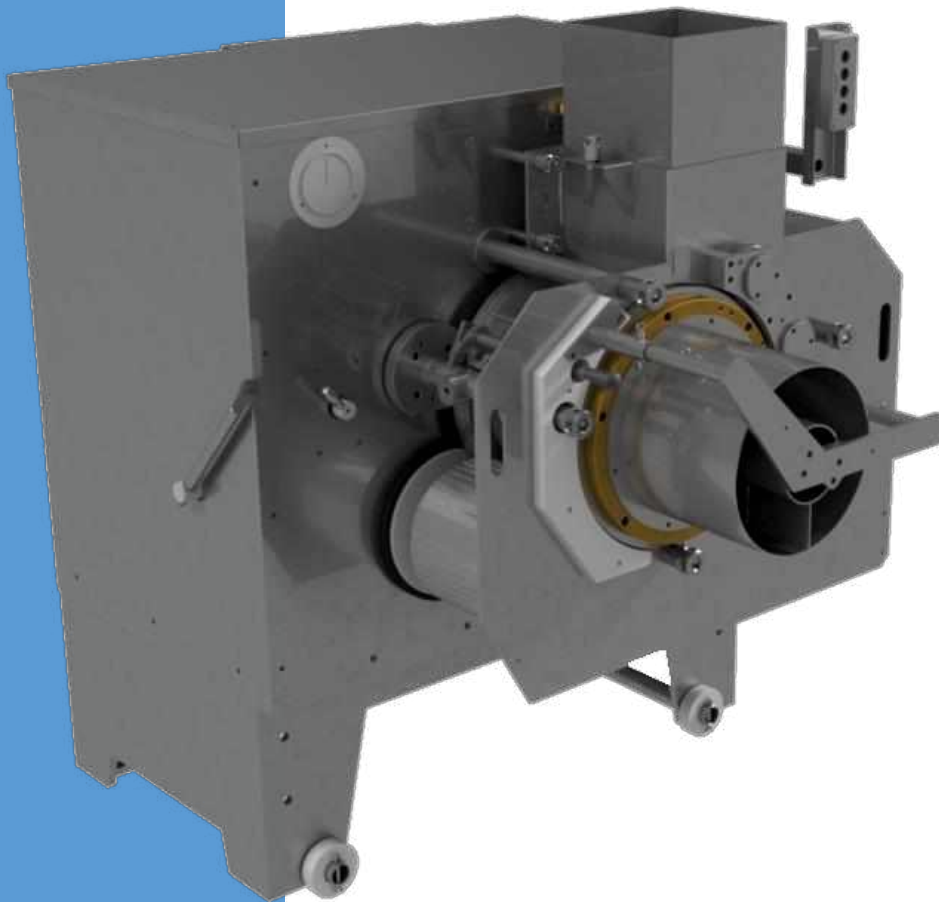


RM 699

MEAT AND BONE SEPARATOR



223, Gamcheonhang-ro, Saha-gu, Busan, South Korea, 49454

Fax: +82-51-2638-940

E-mail: noatek1@gmail.com

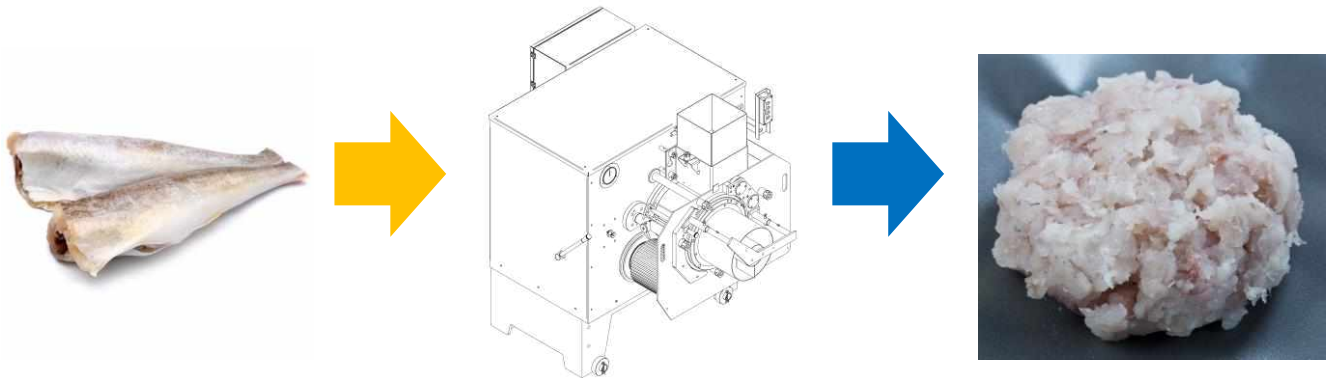
CEO KIM A.B.

Phone: +82-10-5049-4892

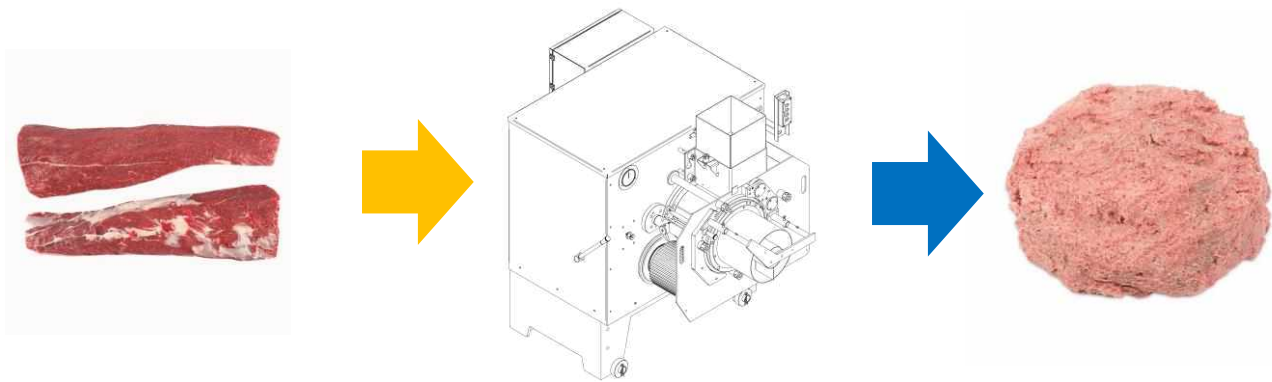
Technical data

OEM	RM Pusan Group
Equipment	Meat and bone separators or mincing machines are used to separate meat from bone in the production of edible minced meat, chicken or fish, which allows the production to expand the range of products. range of products and maximise the use of raw materials
Throughput rate	up to 3000 kg/h depending on the quality of the raw material, the size of the holes in the perforated drum and its speed.
Frame material	Stainless steel
Power consumption	5,5 kW
Connection to power supply	380V 3F 50/60 Hz
Perforated drum rotation speed	adjustable (up to 35 revolutions/min)
Pressure	0-110 bar
Dimensions of the machine	
Length	1307 mm
Width	1743 mm
Height	1427 mm
Weight	1326 kg

Raw fish. Processing..... End-product



Raw meat. Processing..... End-product



Dimension drawing

