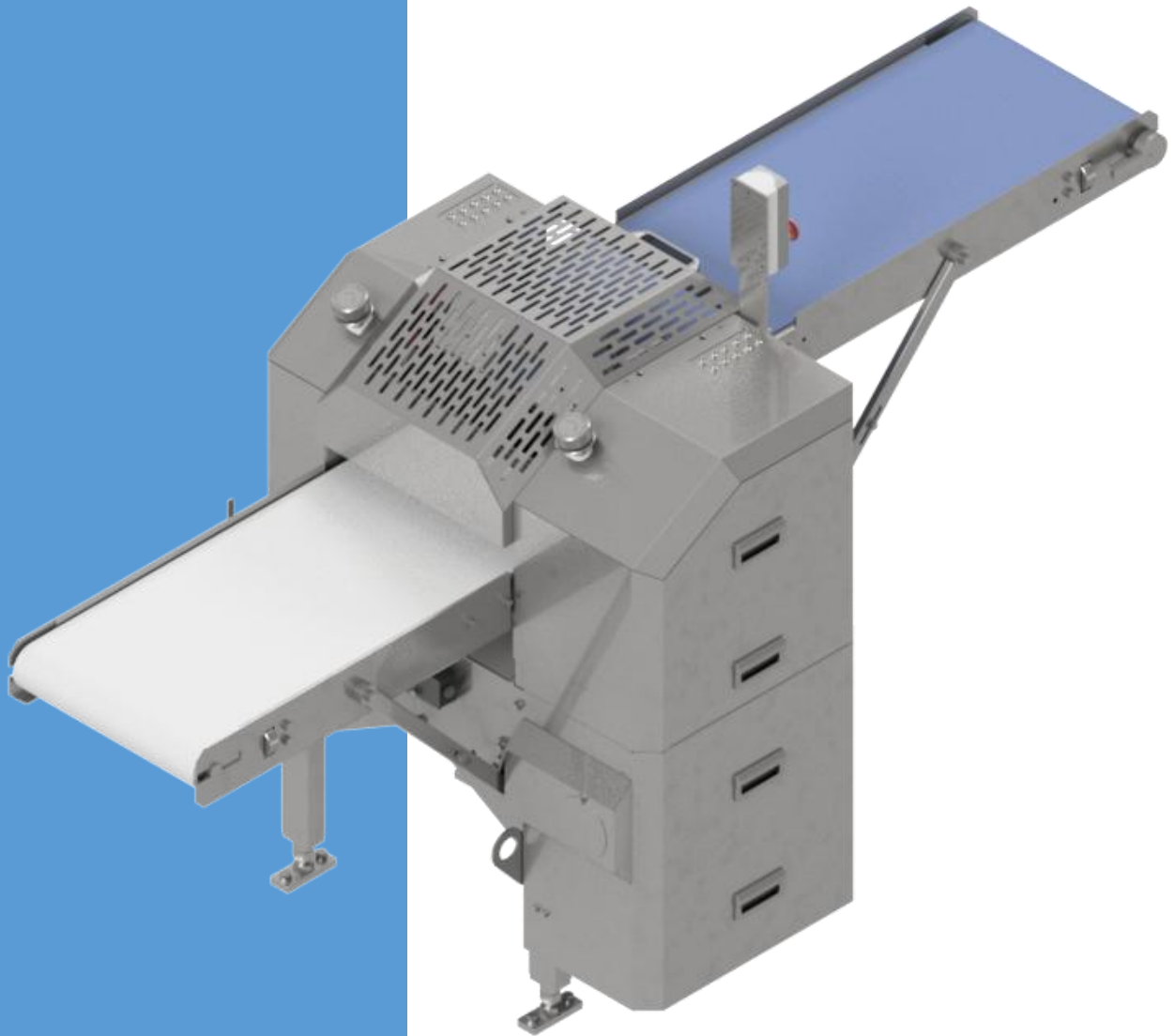


# RM 250

## SKINNING MACHINE



223, Gamcheonhang-ro, Saha-gu, Busan, South Korea, 49454

Fax: +82-51-2638-940

E-mail: [noatek1@gmail.com](mailto:noatek1@gmail.com)

CEO KIM A.B.

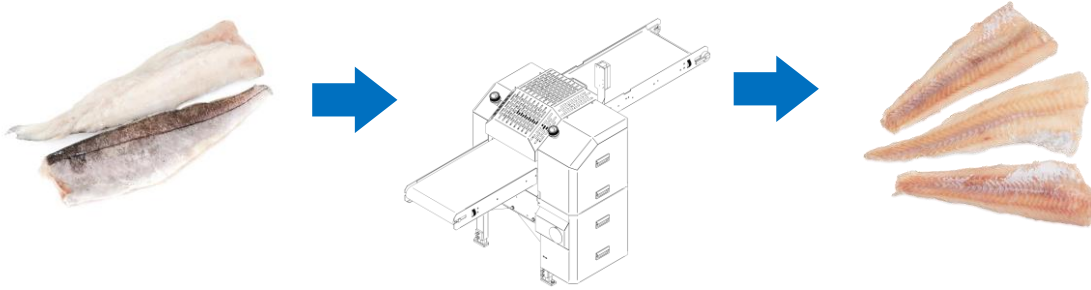
Phone: +82-10-5049-4892

## Technical data

OEM	RM Pusan Group
Equipment	Designed for skinning of various fish species
Throughput rate:	Approx. 80 fillets/min for fillet length approx. 25 cm
Frame material	Stainless steel
Power consumption	Drive 1,5 kW Blade drive (option) 0.37 kW Total (with blade drive) 1.87 kW
Connection to power supply	380V 3 phase 50/60Hz
Water supply	
Connection	1" hose (hose ID 25 mm)
Pressure	3-4 bar
Consumption	abt. 25 liters/min
Dimensions of the machine	
Length	2152 mm
Width	903 mm
Height	1335 mm
Weight	382 kg

---

Raw fish.....Processing.....End-product



Dimension drawing

